



International Forming Technology Exhibition

Concurrent Show



International Exhibition of Dies & Moulds, Forming Tools, Machine Accessories, Metrology and CAD / CAM



International Exhibition on Industry 4.0 & Additive Manufacturing



Published by



Indian Machine Tool Manufacturers' Association

16 - 21, JUNE, 2022 | BANGALORE, INDIA

DAY 3 • Saturday, June 18, 2022



ONE ROOF BATTERY SOLUTIONS



Prismatic Cell Battery

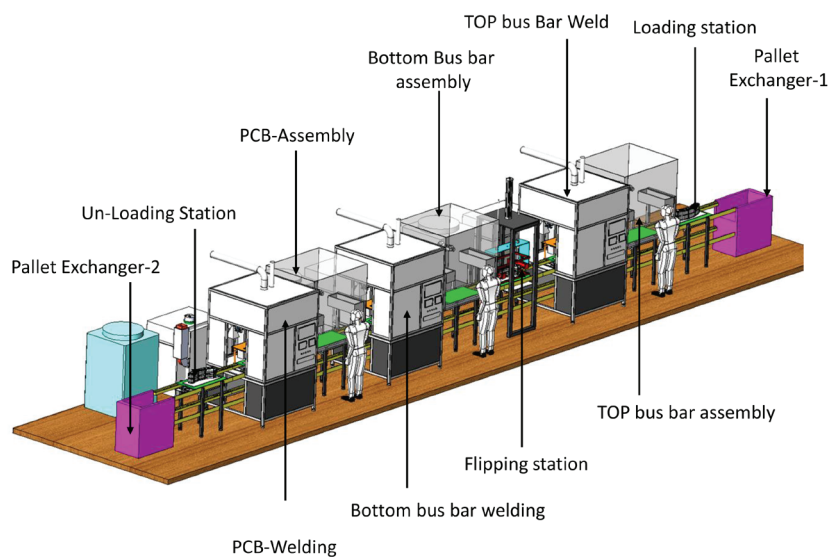


Cylinder Cell Battery



Pouch Cell Battery

BATTERY ASSEMBLY AUTOMATION



Hall 4
Booth A105A

LASER CLADDING

BONDING TOGETHER OF DISSIMILAR MATERIAL

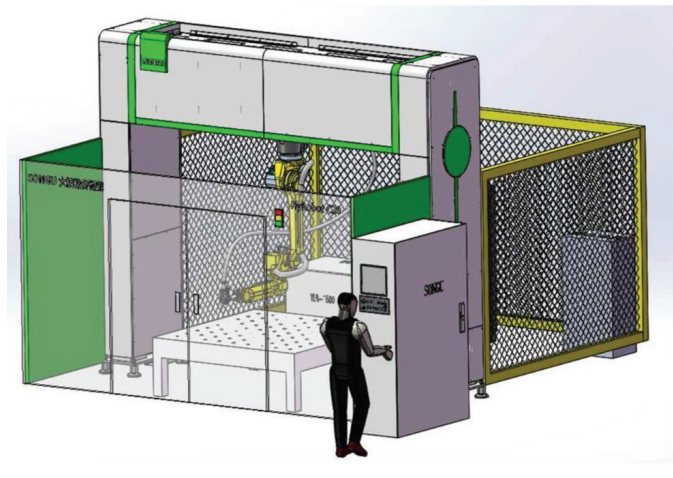


LASER HARDENING

HARDER SURFACES TO A SHALLOWER DEPTH



METAL 3D PRINTERS



3D LASER CUTTING



International Forming Technology Exhibition

Concurrent Show



International Exhibition of Dies & Moulds, Forming Tools, Machine Accessories, Metrology and CAD / CAM



International Exhibition on Industry 4.0 & Additive Manufacturing

Published by



Indian Machine Tool Manufacturers' Association



16 - 21, JUNE, 2022 | BANGALORE, INDIA

SHOWDAILY™

The Official Show Daily of IMTEX FORMING 2022

Day 3 • Saturday, June 18, 2022



LASER SOLUTIONS

Making The Right Moves

Laser Technologies is proud to have an impressive list of domestic clients that comprises enterprises of sizes big and small. The company team has come down from different parts of the country to showcase its strengths in a wide range of laser solutions and let the customers know of its e-commerce platform.



Laser Technologies Pvt Ltd
www.lasertechnologies.co.in
Hall 4, Booth A130

If anyone can boast of adding 5,000 customers in 4,015 days, they must be doing something right. When most companies are struggling to retain customers, Laser Technologies Pvt Ltd has been galloping at an admirable speed. Perhaps, batting on all fronts as a team helps. The company has invited its team from

Delhi, Mumbai, Pune, Ahmedabad, Baroda, Jaipur, Jalandhar, Raipur, Indore, Chennai, and Hyderabad at IMTEX. This will put everyone on the same page as information gathered at the exhibition will be disseminated across geographies. With IMTEX happening later than it should have, due to the pande-

mic, the management is sure that the openness of the trade fair will give visitors a chance to compare products and solutions before they make their buying decision. As an organization, Laser Technologies believes in empowering Indian MSMEs to deliver quality services and grow their business manifold by providing innovative

yet affordable solutions, ranging from laser marking, laser welding, 2D laser cutting, 3D laser cutting, laser cladding, and laser hardening. At IMTEX FORMING, it has launched two products: One is India's highest power fiber laser cutting machine with a 23 kW power, and

To be continued on 4 ➔

Meet us... 

Look into the future with **EMERGING LEADER**

IS BURR A HEADACHE?

Hall : 2A | Booth : C 102
Date : 16 to 21 June 2022



Valgro-Hyzer
Deburring + Finishing + Cleaning

Valgro India Limited
Expert in Metal Preparation

www.brushingmachine.com
sales@valgroindia.com
www.valgroindia.com

SOLUTIONS FOR Deburring + Finishing + Edge rounding + Slag removal + Oxide removal + Surface Finishing for SHEET METAL PROCESSING



Continued from 3

the first in India. The team says that if anyone wants to see magic, then one must see this machine in action while air cutting of MS/SS. The second one is the Upstroke PRESSBRAKE 8025NT, which

gives accuracy and speed, especially in thin material, and whose touch screen controller is highly user-friendly. The company's machines are used for stainless steel, copper, mild steel and aluminium.

» People have understood the value of technology and smart manufacturing and are ready to invest and compete, making services readily available and affordable for the end customers.«

Rakesh Agarwal
Managing Director
Laser Technologies Pvt Ltd

Sharp Moves

Rakesh Agarwal, Director, Laser Technologies says, "Cutting-edge technology, which was previously not available to Indian customers, is displayed right here. This gives customers a choice and the difference different products can make to their own venture. While a few years back, there would be few champions of technology in every major city. This is not the case anymore. People have understood the value of technology and smart manufacturing and are ready to invest and compete, making services readily available and affordable for the end customers."

It has made both the machinery market and the job market as customer markets. This results in end users getting good bargains, job shops optimizing their production via intelligent operations and new technology, and machine manufacturers earning honest profits only. For the company promoters, the idea of setting up Laser Technologies was to provide affordable yet efficient solutions to Indian MSMEs. It introduced an economical and productive fiber laser cutting machine in India from HSG. With over 600 installations in the last seven years, it has become synonymous with laser cutting. The company has also introduced cost-effective solutions under its brand PhotonX for laser marking,

laser welding, non-metal laser engraving, and sheet metal bending machines. Apart from this, it has unique and innovative solutions for pillow plate welding from Rodomach Netherlands, electrical lamination cutting from Stiefelmayer Germany, die mould repair and laser welding from Alpha Laser Germany, nonmetal laser processing from SEI Laser Italy and roll forming/H beam processing from Akyapak Turkey.

Impressive Client Base

Laser Technologies believes that change in requirements is often technology-driven. All new technologies take time to become industrialized. Today, companies are required to keep a sharp eye out on technological developments happening around the world and prepare to take new technological products on board. It is also well known that Indian customers are more open to accepting new technologies than they have ever been. As customers' demand for technological advancements grows, so do efforts in research and development. Agarwal says that the industry is both push and pull driven.

The company serves a wide range of customers from big corporates to MSMEs.

Technology is Crucial

Agarwal shares that advanced technologies have already made significant inroads into the metal forming sector over the last decade or so. Digitization of information and development in software has made the industry more agile than ever and will continue to do so. Although big data and IoT do not have a lot of usage in metal forming, robotics does. He expects software and robotics to drive smart manufacturing in metal forming.

Would you like to be crowned a Productivity Champion ?

.... Share your success stories on
PRODUCTIVITY | TECHNOLOGY | INNOVATION

Win Cash Awards upto
₹ 10,00,000

@
National Productivity Summit 2022
18 - 19 November 2022, Bangalore

AWARDS SPONSOR



IMTMA - ACE MICROMATIC
Productivity Championship
Awards 2022

No Entry Fee !

Multiple Entries are Welcome !

RUSH YOUR ENTRIES NOW !

Productivity Champions of Yesteryears

• Mahindra & Mahindra • Hero Motocorp • SKF • Maruti Suzuki • Tata Motors • Bajaj Auto • TVS Motors • Bosch • Godrej & Boyce • Toyota Kirloskar Auto Parts • Titan Industries • UCAL Fuel Systems • ACE Designers • Delphi TVS • BHEL • HAL • Tata Steel • BEL • Rane TRW • L&T MHPS • Cummins • Adler Mediequip • Associated Plasmatron and many more...

Organised by: **IMTMA** Indian Machine Tool Manufacturers' Association
www.imtma.in

To participate, please log on to: www.productivity.imtma.in or call Abhishek on: +91 9844294387

Extend the flexibility and productivity of Salvagnini panel benders



Rapid industrial developments of recent years continue to set tough challenges. Because industry has changed: the large batches typical of series production have changed to small-medium sized batches, or have been completely replaced by just-in-time production. A high item turnover rate, shortened lead times, and a constant lack of highly qualified personnel, have moved the focus to automation and robotization, which allow production to be extended beyond traditional manned work shifts and ensure operatives are engaged only in activities with high added value.

“We wanted a smart solution which was much simpler than those already on the market: simpler to program, simpler to use, and able – if possible - to exponentially improve the flexibility and productivity of our panel benders. And we also wanted a solution suited to our compact panel benders, not just the automatic ones. With P-Robot, we are sure we have achieved our goal.” explains Nicola Artuso, Salvagnini Product Manager for bending technologies. The P-Robot can be incorporated with all the panel bender models – P1, P2, P4 & PX.



SALVAGNINI MACHINERY INDIA PVT LTD
 No. 26, 2nd Floor, New BEL Road,
 R V M 2nd Stage, Above Taco Bell,
 Bengaluru, Karnataka 560054
www.salvagninigroup.com

IMTEX FORMING
2022
 International Forming Technology Exhibition
 16 - 21 June 2022, Bengaluru, India
 Visit us at Hall No: 4 - B102

salvagnini

MARKING TECHNOLOGIES

Making a Mark

MarknStamp is here at IMTEX FORMING 2022 & Tootlech 2022 to showcase its unique marking solutions. Here's knowing its plans at the show and later...



Stamp 'It Robotai & Solutions Pvt Ltd
www.marknstamp.com
Hall 2A, Booth C117



Source: Stamp 'It Robotai & Solutions Pvt Ltd

» We have participated with our full potential so we can increase our brand awareness and generate quality leads. This is the right place to meet our customers and decision-makers to grow our clientele.«

Deviprasad Upadhyay
Vice President-Sales
Stamp 'It Robotai & Solutions Pvt Ltd

MarknStamp is a family-owned company operating in the field of automation since 1974. Involved in providing integration solutions to a French dotpeen machine manufacturer until 2002, the company changed its policies and decided to open an office in India, discarding all its earlier relations. "Our sudden change in decisions triggered us to think of indigenizing this technology. When we conducted the preliminary study, we found a way to simplify the technology. We had to do a thorough R&D on creating the first machine, which we did and sold the first machine in 2005. Since then, we have not looked back. Consistent improvements in technology and the introduction of new models have contributed to our growth till now," says Deviprasad Upadhyay, Vice

President-Sales, Stamp 'It Robotai & Solutions Pvt Ltd.

Focus to Grow

In 2017, the company launched MNSB, the world's first mobile-operated, Wi-Fi-based handheld marking machine that weighs 2.5 kg with a powerful 5 Ah battery. Upadhyay elaborates, "When we started looking at expanding globally, we knew that the competition from China was fierce. We spent time studying the competitors and identified a particular gap in the product range where there was the least competition. Furthermore, there was a growing demand for good handheld machines, which prompted us to take up the development of this machine. It took us three years to finish the model up to international standards. We launched this machine in Germany."

This machine was designed keeping in mind the European customer. "It was designed to be ultra-modern, incorporating the latest technologies and making it Industry 4.0 compliant. We decided to stick to standard batteries that are usually available globally. The machine is still the lightest machine in its category and size. It takes input from software that runs on an Android or iOS mobile or tablet, and also has Windows software," he informs.

Leveraging IMTEX

The last two years, Upadhyay states, were difficult in terms of growth as the pandemic had adversely impacted SMEs. "We hope this edition plays a pivotal role in our growth, as IMTEX is known for being an ideal platform to provide new opportunities for businesses.

We have participated with our full potential so we can increase our brand awareness and generate quality leads. This is the right place to meet our customers and decision-makers to grow our clientele," he adds.

The company is focusing more on its existing range of products to gain momentum for the year. It plans to come up with a new technology later this year as it is in the R&D stage. "Also, we have made a few new updates to our in-house software due to which our marking machines work for a prominent period with precision," he shares. **SD**

Making Engineers Industry Ready

- Career oriented courses for Engineers/Students

- Hands On Training on Machine Tool Design - CNC GPM / SPM
- Finishing School in Production Engineering
- Hands-on Training on Industrial and Machine Automation for Digital Manufacturing

Duration : 6 - 8 weeks

Whom it is applicable

- Fresh engineers seeking a career in manufacturing industry
- Engineering students in Pre final / final year
- New hires in industry

Placement Assistance Provided

IMTMA Technology Centre
Indian Machine Tool Manufacturers' Association
www.imtmatraining.com | www.imtmaelearn.in

For further details and registration, please contact:
Ph : +91 7349067391 / +91 9743180085
E - Mail : training@imtma.in
www.imtmatraining.com | www.imtmaelearn.in

Our state of the art facility in Pune, Chakan MIDC, India



AMPCO® 18, 21 & M4

Expert materials for tube bending

- Maximize tools speed
- Improve sliding properties
- Increase product quality
- No seizing or scratching
- Reduce production cost
- Minimum friction

Tube Bending



Tube Forming



Deep Drawing

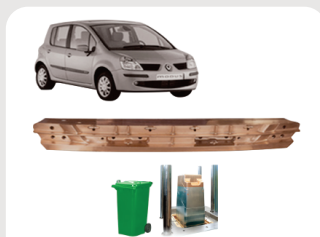


AMPCO® 25

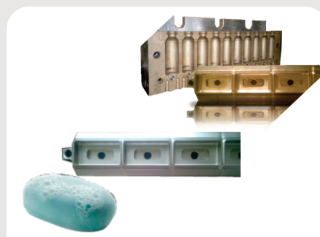
Expert material for tube forming and deep drawing

- Excellent sliding properties
- High hardness, extended life time
- No cold welds, no galling
- Perfect score free surface on stainless steel.
- Not hardening or expensive coating needed
- Easy to regrind, high thermal conductivity

Applications



Plastic Industry
AMPCOLOY® 83/944/940/95



Soap Mould
AMPCOLOY® 940/944



Resistance Welding
AMPCOLOY® 972/940/83/95



Aerospace & Offshore
AMPCO® 45/M4
AMSA4640/4881



Steel Mill & General Engineering
AMPCO® 18/21/M4

Address

AMPCO METAL INDIA PVT. LTD.

A-8/4, At Village - Nighoje, Chakan MIDC,
Phase IV, Tal : Khed, Pune – 410501
MAHARASHTRA, INDIA

Tel: +91 2135 610 810 | Fax: +91 2135 610 811
infoindia@ampcometal.com

AMPCO METAL S.A

Route de Chesalles 48 P.O Box 45,
1723 Marly Switzerland
Toll Free Phone: 800 8080 5050
Tel.: +41 26 439 93 00
Fax.: +41 26 439 93 01

Food Approval of AMPCO®, AMPCOLOY® Materials
AMPCO® 18, AMPCO® M4, AMPCOLOY® 940, AMPCOLOY® 944



FIBRE LASER PROCESSING MACHINES

Innovation in Fiber Laser

AMADA's VENTIS 3015 AJ – 4 kW is the world's first fiber laser with Locus Beam Control technology.

VENTIS is a new laser system equipped with Locus Beam Control (LBC) technology, which allows to modulate the beam and control the movement of the laser beam, ensuring maximum efficiency based on the type of material and thickness to be processed.

The VENTIS AJ is the most significant innovation in sheet metal cutting and introduces the next generation of fiber laser processing machines. What makes this technology truly revolutionary is the innovative beam shaping system that allows for precise control of the laser beam motion. The new AMADA 4 kW single diode module fiber laser engine provides a high-quality laser beam, allowing the VENTIS AJ to be comparable with 6-8 kW machines, with much fewer power requirements and unrivaled cutting quality.

high-brightness oscillator and patented LBC technology, setting a new world standard for fiber laser cutting speed and quality. The technology helps achieve unprecedented high-speed and high-quality cutting – up to 3 times faster than a conventional fiber laser. High-quality air cut up to 12 mm thickness on mild steel has been made possible. Productivity mode and Quality mode are two machine performance modes available in a single machine. Improved bevel/taper on a higher thickness of 20 mm can be achieved. The system's performance is on par with a conventional 6 kW fiber laser. **SD**

Source: AMADA India Pvt Ltd



AMADA India Pvt Ltd
www.amadaindia.co.in
Hall 4, Booth B107

VENTIS 3015 AJ

Other Features

The system is equipped with a

DEBURRING MACHINES

Valgro Hyzer SLR series

The Valgro-De-Slagger Series machines are ideal for removing slag and dross from plasma and gas cut components, as well as to replace chipping and manual grinding operations.

Valgro India pioneers revolutionary sheet metal processing methods that are highly effective. Because it only

requires one work procedure, it is ideal for two-sided deburring and edge rounding of punched, laser, and high-definition plasma cut workpieces. It effectively eliminates plasma arc, saving up to 60 percent of operational costs.

A plasma gas cut components deburring machine is designed to uniformly sand all edges, leaving a thin scratch pattern on the surface. The Valgro De-Slagger Series is intended for use with class 4 and 5 burrs, as well as dross and slag. It is completely automatic and deburr all edges with ease. It consists of a

multi-head deburring and sanding station with rotating heads that form the edge radius on metal objects. It is also possible to use different brush grit combinations on different surfaces of the components.

The SLR series is appropriate for rail coach industries, fabricator work, laser cutting, plasma cutting, gas cutting, die making, and steel and alloy industries, and many other applications.

Features

Slag/dross removal happens on carbon steel in a single pass.

Deburring and edge radius in a single laser-cut part receipt. Grinding and calibration is done with a multi-head working system. It has a Deburring station with multiple heads and an edge rounding station. The machine has a robust and cutting-edge technological system. The Dust extraction system is for dry operation. There is Pressure adjustment on each station and a provision for simple abrasive brush replacement. The conveyor speed (belt/roller) can be adjusted. **SD**

Source: Valgro India Ltd



Valgro India Ltd
www.valgro.co.in
Hall 2A, Booth C102



MURATEC SOLUTIONS FOR SHEET METAL PUNCHING

Muratec, world's first manufacturer of servo driven ram turret punch press introduces leading innovation in sheet metal industry. Muratec's latest Automation Solutions are flexible, easy to use and economical, offering various modes of operation. Tower configuration for Lights out production also available.

MOTORUM

MOTORUM series punch presses are available in various models to meet diversified needs of sheet metal industry. These machines are worldwide popular for its design features, rigidity, high speed productivity, environment friendly design features of minimum power consumption, low noise and high profitability to customers. MURATEC the leading name in automation is fully prepared to offer sheet metal automation solutions to meet the growing production demands in India.

M2048 TS with SL 1250

Compact, Economical and Highly Flexible Automation Solution.



BB6020

Muratec Ball Screw Press Brake BB6020 is driven by AC servo motor & ball screw mechanism



Laser Line-Up

World's First Fiber Laser with LBC Technology

VENTIS AJ Series



Ultra high-speed 3-axis linear drive/Fiber Laser Cutting

REGIUS AJ Series



High-speed, Stable-processing Fiber Laser Machine

LC VALSTER AJ G Series



3 kW Compact Fiber Laser Machine

BREVIS AJ Series



Energy saving, v-lot production, wide range fiber laser machine

ENSIS AJ Series



Hall No - 4
Booth No - B107



Amada (India) Pvt. Ltd
Technical and Vocational Center
No.60, KIADB Bengaluru Aerospace Park,
Singahalli Village, Budigere Post, Bangalore,
North Taluk - 562129, India.
Ph:080-71100200



PANEL BENDING SOLUTIONS

P2lean: From Panel Bender to Work Center

With its high technological standards, low energy consumption, compact layout, and the productivity and versatility typical of all Salvagnini panel benders, P2lean is certainly one of the company's most successful ones.



Salvagnini Machinery India Pvt Ltd
www.salvagninigroup.com
Hall 4, Booth B102

Source: Salvagnini Machinery India Pvt Ltd

Product Manager, Salvagnini, explains. "Like all Salvagnini panel benders, the P2lean natively combines productivity, with its automatic bending and handling cycles, with an average of 17 bends per minute, and flexibility, with its universal bending tools. It doesn't need re-tooling because the upper and lower blades, the counterblade, and the blankholder are universal tools that are able to process the whole range of thicknesses and machinable materials. The ABA automatic blankholder adapts the tool length according to the size of the part being produced in-cycle, without machine downtimes or manual re-tooling."

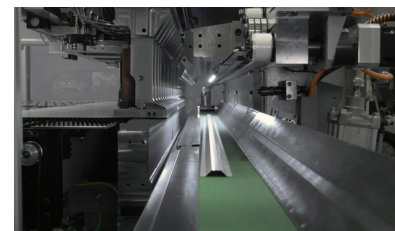
gure and customize each P2lean in the best possible way: its many options respond to a wide range of production requirements. The introduction of the CUT and RSU options broadens p2lean's horizons even further.

The CUT tool is used to create narrow profiles with all the precision and flexibility typical of Salvagnini panel benders: this is a cutting blade that works above the panel bender's lower bending blade. An unloading device ensures the automatic and sequential cutting of profiles with different lengths, materials, thicknesses, and shapes, from a single starting sheet. This option is a distinctive feature of Salvagnini panel benders. It is extremely advantageous when the parts are too small or too narrow to be bent on a press brake or on a standard panel bender, as in the case of very narrow profiles.

The RSU allows the P2lean to use a number of special tools for deburring, ribbing or engraving the sheet metal, if the material has to be weakened or the springback reduced to achieve greater final quality in some bending cycles - for example with tubular bends. With a specific tool, the RSU device can also facilitate the cutting and removal of protective plastic film. **SD**

Transforming into a Work Center

P2lean comes in four models, which differ by maximum bending length (from 2,180 mm to 2,500 mm) and maximum bending height (165 mm or 203 mm). Salvagnini supports each customer with an in-depth initial feasibility study, used to confi-



Source: Salvagnini Machinery India Pvt Ltd

Being competitive today does not merely mean having a fast part production rate: the challenge lies in terms of production efficiency, understood as the ability to move from one production code to the next with shorter re-tooling times, whatever the geometric and mechanical characteristics of the sheet metal loaded and the number and sequence of the bends. Without forgetting that efficiency also means minimizing errors and waste, using increasingly autonomous and extremely precise technologies. Salvagnini responds to all these needs with its own range of

16 different panel benders, one of the most successful of which is precisely the P2lean.

The robust laser tube cutting machines can be equipped with automation like an autoloader to ensure safe and automatic loading even of special profiles to attain uninterrupted and highest productivity. The power-packed machines can also be integrated with automation for the flexibility of Bevel Cutting up to the range of 45 degrees.

Productive and Precise

"For us at least, there is a truly large number of available panel bending solutions," Nicola Artuso,

LATEST LAUNCH

Automation in Bending Technology

The BCe Smart, with its compact solution, offers a new concept that revolutionizes the traditional press brake bending, thanks to an intermediate level of automation.

Some BCe Smart Benefits

It delivers higher productivity due to the ergonomic loading operation in a single sequence with the unloading. It has a modern 2D/3D CAM for easy and reliable programming. It helps reduce maintenance costs and energy and is pre-configured for integration with an industrial robot. **SD**

Prima Power India Pvt Ltd
www.primapower.com
Hall 4, Booth A114



Source: Prima Power India Pvt Ltd

METERING AND MIXING SYSTEMS

The Right Mix

Dopag India offers an extensive range of high-quality components and produces metering and mixing systems precisely in the way needed. Depending on the specifications and the material to be processed, it uses piston, gear, or eccentric screw pumps. Solutions offered are for metering, mixing, and application of single and dual-

"We are here to exhibit our state-of-the-art gasketing machine that would be valuable for control cabinet manufacturers."

Anoop Thampy
Director
Dopag India Pvt Ltd



Source: Dopag India Pvt Ltd

component lubricants, adhesives, sealants, potting compounds, and foam seals.

The company has developed DynamicLine E system, specifically for Indian customers, which are being showcased at IMTEX. **SD**



PREPARE TO BE AMAZED

LightWELD™ XC

HANDHELD LASER WELDING & CLEANING

VISIT US:

LIVE DEMO AT IMTEX 2022
HALL # 4
BOOTH # C101
VENUE - BIEC, BENGALURU
DATES - JUNE 16 - 21, 2022



FASTER & EASIER

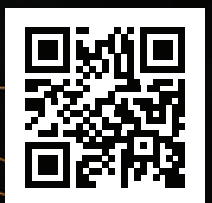
than Traditional MIG & TIG Welding

OPTIMIZED BUILT-IN MODES

LOW HEAT INPUT

PRE & POST-WELD CLEANING

INCREASED PRODUCTIVITY



LEARN MORE

ENGINEERED ALLOYS

Proving Its Mettle

AMPCO METAL has earned its reputation as a trusted partner in copper based alloy solutions by assisting its clients in resolving technical issues with highly engineered alloys made from readily available materials. With a strong portfolio, the company is all set for tremendous growth in the coming years.



Source: Magic Wand Media

According to Tushar Pawar, National Head, AMPCO METAL India Pvt Ltd, IMTEX FORMING is one of the most notable exhibitions in India to connect with the audiences. “It plays a critical role in the development of the Metalworking industry and helps the stakeholders connect,” he adds. Creative engineers worldwide choose AMPCO® bronze alloys to broaden their manufacturing options when forming high-value materials such as stainless steel or low carbon steel, titanium, and other exotic materials. IMTEX FORMING helps AMPCO METAL demonstrate such solutions to the potential users and find opportunities in the applications which are new and challenging. “This is a fantastic opportunity to get on a physical platform after a big gap owing to the pandemic. We are looking forward to meeting our existing and potential customers. Industry experts, engineers, and high-level delegates from the public and private sectors are at the show. Hence, we are eager to demonstrate our great range of materials for the Metal Forming industry,” adds Pawar.

Product Offerings

AMPCO METAL has pioneered and produced the best metal solutions for the world’s products, applications, and industries for over a century. A manufacturer of specialty

copper alloys under the brand names AMPCO® and AMPCOLOY® and a forerunner in developing Aluminum Bronze alloys, the company continues to engineer premium products for critical applications with its well-known AMPCO® product line to this day. Its high-quality, high-property and uniquely hard metal range is trusted worldwide for its broad use. “AMPCO® Aluminum Bronze extends to food-approved applications through alloys such as AMPCO®8, AMPCO®18, and AMPCO®M4,” adds Pawar. “Our high-hardness materials AMPCO®21, AMPCO®22, and AMPCO®25 are used where high compressive forces are in play and critical for the end product’s quality,” he shares. In addition, AMPCOLOY® High Copper alloys are engineered with exceptional conductivity, high strength, and unique wear characteristics, delivering higher lifetime, quality, and performance with cleaner trace elements. These materials are used in critical applications that require conductivity and mechanical properties, such as plastic molds and resistance welding. AMPCO METAL caters to various industry segments, including aerospace, automotive, general engineering, marine, metal processing, oil, gas & chemical, plastic processing, resistance welding, and steel mills.



Source: AMPCO METAL

» Creative engineers worldwide choose AMPCO® bronze alloys to broaden their manufacturing options when forming high-value materials such as stainless steel or low carbon steel, titanium, and other exotic materials. IMTEX FORMING helps us demonstrate such solutions to the potential users and find opportunities in the applications which are new and challenging.«

Tushar Pawar, National Head, AMPCO METAL India Pvt Ltd

Launches at IMTEX

AMPCO METAL’s solutions are a game-changer for the Forming industry, notes Pawar. “We will be showcasing a range of tube bending tools, tube forming + welding rolls, deep drawing dies, high-wear resistant parts, resistance welding electrodes, etc.,” he adds.

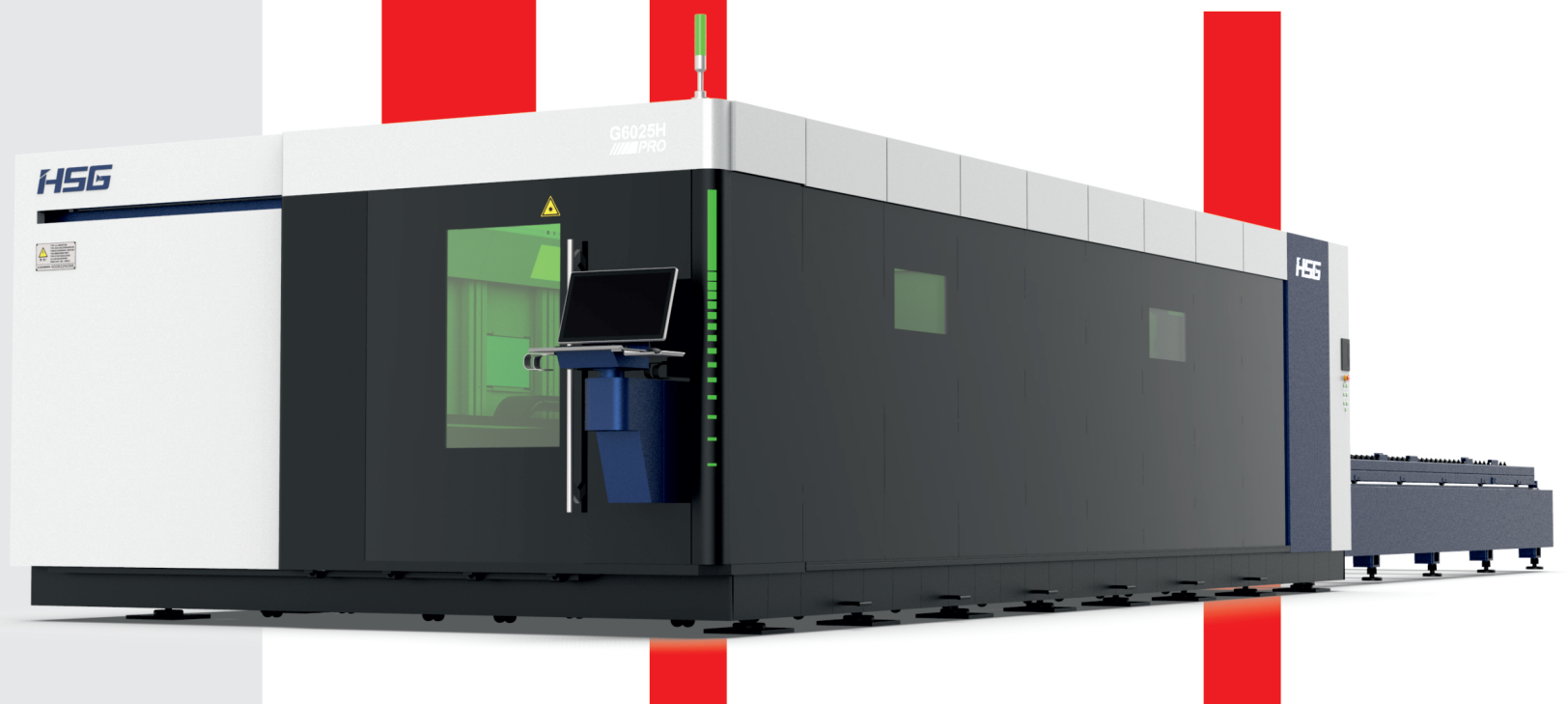
AMPCO METAL has developed the in-house capacity to design, supply, and prove out the tube bending die set. The company is launching Tube Bending tooling sets as a new product at the show. “This is exciting news for tube bending machine manufacturers and users in the aerospace industry, exhaust tube manufacturers, hygienic tube producers, furniture manufacturers, etc.,” shares Pawar.

Knowing MICROCAST®

Tube benders always seek lower cost-per-bend, and AMPCO METAL ensures the same. “AMPCO® Tube Bending tooling gives great benefits to tube bending of stainless steel and titanium tubes. It increases the product quality and life of the production tooling,” he shares. MICROCAST® is the company’s patented high-performance aluminum bronze and specialty copper alloy production technology that delivers the most uniform grain size with the most outstanding wear resistance. Based on the exclusive magnetic steering (Magneto-Hydro-Dynamic) at the melting/casting furnace, this manufacturing process produces extremely fine grain and uniform microstructure, promoting excellent dispersion of the alloy chemical elements for consistent quality and durability.

Build A Laser **Business.**

HSG G6025H



POWER : 12000W+



LASER MARKING!! LASER CUTTING!! LASER WELDING!!
LASER MARKING!! LASER CUTTING!! LASER WELDING!!
LASER MARKING!! LASER CUTTING!! LASER WELDING!!
LASER MARKING!! LASER CUTTING!! LASER WELDING!!

16 - 21 JUNE 2022
HALL - 4, STALL NO
A130 & A135,
BIEC, BANGALORE

FIBER LASER TUBE CUTTING SYSTEMS

Leveraging Automation

The versatile T6000 Laser Tube Cutting Series is packed with intelligent features for multifold productivity.

SLT Group has introduced a new way to process tubes and pipes with its Tube Cutting Series: T6150 / T6200 / T6300, which provides exceptional cutting quality and better productivity. This smart solu-

tion is a one-of-a-kind combination of the Group's proprietary Laser Technology and a robust mechanical structure built by the company's in-house R&D team.

The robust laser tube cutting machines can be equipped with automation like an autoloader to ensure safe and automatic loading even of special profiles to attain uninterrupted and highest productivity. The power-packed machines can also be integrated with automation for the flexibility of Bevel Cutting up to the range of 45 degrees.

Features

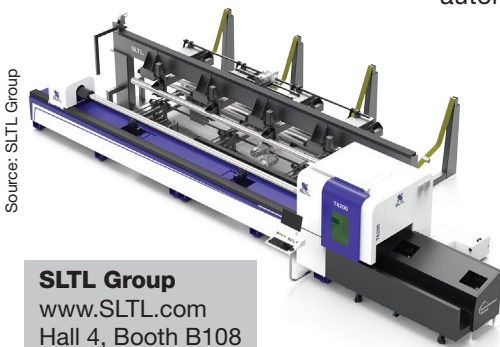
Designed for Precision: The series has automation of Bevel Cutting, Tube Slitting, and an Automatic Loading-Unloading system. The system is capable of delivering excellent edge quality, efficient cutting and cost-effective processing.

Advanced Software: SLTL's Tube cutting machine allows advanced nesting programs to be created and run on the system. The software provides flexibility for the users to add, change or delete programs on the go. Equipped with the faster nesting software program, the tube cutting machine helps in saving money and control

material wastage. Its smart nesting feature benefits manufacturers by closely placing design elements together and, if possible, even sharing cut lines.

More shapes and materials: Unique integration of the hardware and the software allows the SLTL's Laser Tube Cutting machines to operate on varied tube shapes like square, round, rectangular tubes, I-Beam, L Channel, C Channel, various angles and channels, and some angle profiles.

This Laser Tube Cutting System is designed to provide extreme precision, productivity, and quality on materials such as SS, MS, Al, Cu, Br, Gl, and more. **SD**



Source: SLTL Group

SLTL Group
www.SLTL.com
Hall 4, Booth B108

HYDRAULIC CLAMPS

ROLLBLOC HYDRAULIC CLAMPS

The die clamping systems have quick-action clamping technology.

Hydronic clamps can be used to reduce downtime when dies need to be changed frequently. With a defined clamping pressure, die clamping is extremely precise as all clamping elements are effective simultaneously.

Integral features of such a die clamping system include complete die protection in conjunction with effortless operation. The mini-

mum handling requirements save considerable time.

The ROLLBLOC product range includes five different hydraulic clamping systems –Hollow piston clamp, Sliding clamp, Ledge clamp, Wedge clamp, and Block clamp. The different types can be used in combined arrangements. (Example: ROLLBLOC ledge clamps on the press table, ROLLBLOC Wedge Clamps on the ram).

A die change can be carried out particularly fast when die base plates of the same size are used for quick die change. Special sets of hydraulic valves are used for controlling the ROLLBLOC hydraulic clamps.

The ROLLBLOC hydraulic unit produces the necessary clamping pressure in an independent operating system. Hydraulic components, valve kits, hydraulic distri-



Source: Güthle Pressenspannen GmbH

Güthle Pressenspannen GmbH
www.guethle-swt.de
Hall 3A, Booth E103

butor plates, and hose connections are used as supplementary components. **SD**

FLT-6035ETN

OPTIONAL

φ350mm φ450mm φ600mm

T1

Stack-welded integrated bed
Side hanging chuck structure
Integrated electric control cabinet structure

0 tailings function

www.jqlasergroup.com

Kjellberg
INDIA

- ✓ QUALITY IN PLASMA CUTTING
- ✓ QUALIFIED KNOW-HOW
- ✓ MADE IN GERMANY

Visit us at IMTEX
Hall 4, Stand A119
www.kjellberg.de

VISIBLELY DIFFERENT
Q-SERIES



Make it possible

IMTEX FORMING
2024

International Forming Technology Exhibition

Concurrent Shows



International Exhibition of Dies & Moulds, Forming Tools, Machine Accessories, Metrology and CAD / CAM



International Exhibition on Industry 4.0 & Additive Manufacturing

18 - 23 January 2024, Bengaluru, India

Organiser



Indian Machine Tool Manufacturers' Association

Venue



www.imtex.in

Follow us on    

Visit us at

HALL : 4
BOOTH : B-108



MAXIMIZE YOUR GAINS

Vector is SLTL Group's most powerful laser cutting system, filled with high-tech features.

This reliable and productive system, guarantees the lowest cost per part.

With Vector's real-time production process optimization, you would gain operational and performance insights and boost productivity.



Change for the Better!