



International Forming Technology Exhibition

Concurrent Show



International Exhibition of Dies & Moulds, Forming Tools, Machine Accessories, Metrology and CAD / CAM



International Exhibition on Industry 4.0 & Additive Manufacturing



Published by



Indian Machine Tool Manufacturers' Association

16 - 21, JUNE, 2022 | BANGALORE, INDIA

DAY 4 • Sunday, June 19, 2022

LASER
TECHNOLOGIES™

*Only The Best For **You!***

Big Challenges, Big Solutions.



AKYAPAK
AHS30/60

**BEST ROLL FORMING MACHINES FOR
PLATE AND H - BEAM**



**16 - 21 JUNE 2022
HALL - 4, STALL NO
A130 & A135,
BIEC, BANGALORE**

LASER MARKING!! LASER CUTTING!! LASER WELDING!!
LASER MARKING!! LASER CUTTING!! LASER WELDING!!
LASER MARKING!! LASER CUTTING!! LASER WELDING!!
LASER MARKING!! LASER CUTTING!! LASER WELDING!!

Make A **BIG** Impact
With Your Small Business!!



POWER : 20-100W

LASER MARKING!! LASER CUTTING!! LASER WELDING!!
LASER MARKING!! LASER CUTTING!! LASER WELDING!!
LASER MARKING!! LASER CUTTING!! LASER WELDING!!
LASER MARKING!! LASER CUTTING!! LASER WELDING!!



16 - 21 JUNE 2022
HALL - 4, STALL NO
A130 & A135,
BIEC, BANGALORE



International Forming Technology Exhibition

Concurrent Show



International Exhibition of Dies & Moulds, Forming Tools, Machine Accessories, Metrology and CAD / CAM



International Exhibition on Industry 4.0 & Additive Manufacturing

Published by



Indian Machine Tool Manufacturers' Association



16 - 21, JUNE, 2022 | BANGALORE, INDIA

SHOWDAILYTM

The Official Show Daily of IMTEX FORMING 2022

Day 4 • Sunday, June 19, 2022



FIBER LASERS

Gearing Up for a Bright Future

IPG Photonics has always been the frontrunner in bringing technological revolution, and this time it won't be different. The company is committed to delivering the best solution for every organization through its fiber lasers, process heads, beam delivery products, and quality enhancement solutions.



IPG Photonics India Pvt Ltd
www.ipgphotonics.com
Hall 4, Booth C101

Source: Magic Wand Media

Rajesh Sharma, General Manager, IPG Photonics India Pvt Ltd, believes that a platform like IMTEX FORMING is an excellent way for the company to enlighten visitors and propagate the message of the application of fiber lasers replacing conventional methods. "The gamut of industries exhibiting in this show

in the forming segment will be enriched with the kind of job they can achieve with fiber lasers. We will be focusing on all major applications during this show," he adds.

For Faster Welding

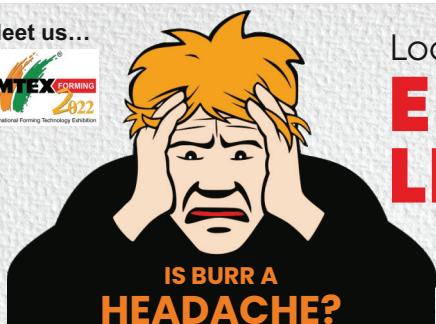
At the event, the company has launched the combined handheld laser welding and cleaning

system, LightWELD 1500 XC. This is an extended version of the recently launched LightWELD 1500, which was meant only for handheld welding applications. LightWELD XC expands the welding capabilities of LightWELD with cleaning modes to remove oils, rust, and coatings quickly and easily before welding and

remove debris and discoloration after welding. "It offers exceptional visual appearance without the time and expense of abrasives or chemicals. For welding, LightWELD XC enables dramatically faster welding and provides higher-quality, consistent results

To be continued on 4 ➔

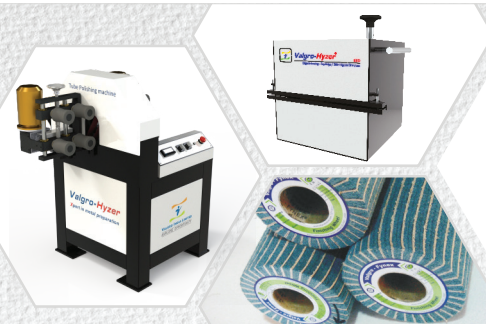
Meet us...



IS BURR A HEADACHE?

Look into the future with **EMERGING LEADER**

Hall : 2A | Booth : C 102
Date : 16 to 21 June 2022



Valgro-Hyzer[®]
Xpert in Metal Preparation



www.brushingmachine.com
sales@valgroindia.com
www.valgroindia.com

SOLUTIONS FOR Deburring + Finishing + Edge rounding + Slag removal + Oxide removal + Surface Finishing for SHEET METAL PROCESSING

» We expect to meet end-users from the fabrication industry looking out for handheld laser welding solutions for enhancing their production capabilities. We look forward to connecting with MIG and TIG users who are planning to overhaul their current technology with the latest revolutionized trend in the welding segment. In addition, meeting our end-users and regular OEMs, who are manufacturing laser cutting machines and laser welding systems in India, is also on our agenda. «

Rajesh Sharma
General Manager
IPG Photonics India Pvt Ltd

Continued from 3 »

across a wider range of materials and thicknesses than MIG or TIG with minimal distortion, undercut or burn-through,” he says.

A Range for EVs

IPG Photonics India also anticipates a surge in battery welding applications for the EV sector. To cater to this, the company is showcasing its entire solutions range for this application. It has the AMB lasers with a core and ring feature for spatter-free, high-quality welding along with its process heads. This solution has been advanced by the introduction of the company’s inline weld monitoring system i.e. LDD 700, a real-time, non-destructive system for measuring weld quality.

With EV and e-mobility becoming the talk of the town, the company has aced it with its technology solutions. Sharma and his team are looking forward to meeting companies that are into EV manufacturing and ancillaries, battery pack manufacturing, and other automotive manufacturing and presenting advanced and cutting-edge solutions to them.

“We expect to meet end-users from the fabrication industry looking out for handheld laser welding solutions for enhancing their production capabilities. We look forward to



Rajesh Sharma, General Manager, IPG Photonics India Pvt Ltd at the company booth.

connecting with MIG and TIG users who are planning to overhaul their current technology with the latest revolutionized trend in the welding segment. In addition, meeting our end-users and regular OEMs, who are manufacturing laser cutting machines and laser welding systems in India, is also on our agenda,” says Sharma.

Innovating Every Step of the Way

There are some success stories here. The astounding success of fiber laser technology and its impact on laser-based manufacturing bear the hallmarks of a more widely publicized technology game-changer, such as the displacement of vacuum tubes by the transistor. The analogy is apt when one considers that legacy lasers are bulky, inefficient, and short-lived devices that are difficult to assemble and require frequent service. Fiber lasers, on the other hand, are compact, highly efficient, and robust devices that offer service-free operation throughout the entire application lifetime. IPG’s unique technology platform allows products to have higher output powers and brings a sense of stability and superior beam quality at a lower cost than can be achieved by any other competing technology.

“Our proprietary designs are based on innovative pumping techniques and high-performance components perfected by IPG over 20 years’ intense investment and innovation. The cornerstones of IPG technology are our cladding side-pumping technique and distributed

single-emitter diode pumping architecture. Our fiber lasers find their use in automotive, e-mobility including battery manufacturing, telecom, consumer electronics, aerospace, defense, medical device manufacturing, semiconductors, etc.,” he adds.

Sharma is sure that with such offerings, a physical show like this will attract crowds as such shows generate authentic leads that get converted into sales.

At an estimated value of approximately US\$2.5 billion in 2020, the global fiber laser market is predicted to grow at a CAGR of around 15 percent and is valued at US\$8.5 billion by 2030. The increase in the use of fiber lasers in cutting applications (flat sheet cutting, tube cutting, and 3D cutting) in several sectors like the sheet metal forming market, aerospace, military, and other sectors for manufacturing multiple types of equipment, is creating a tremendous growth opportunity for this market.

Fiber lasers are also used to cut silicon for solar cells and semiconductors, shape items in manufacturing and industrial environments, cut stents for medical applications, and cut gems for jewelry. They are also utilized in the automotive industry to cut stator plates and battery foils. In addition to the cutting applications, they are used in the EV battery manufacturing sector and e-mobility applications.

Modern Uses

Few outside the industry know and understand that there are specific applications where fiber lasers can

replace conventional methods. Sharma lists out:

- **Welding and Cutting:** As new lightweight vehicle designs come to the forefront in automotive, fiber lasers are increasingly critical in today’s highly automated, flexible production lines.

IPG’s broad solution of lasers, beam delivery products like wobbler heads, scanners, and in-line weld measurement tool i.e., LDD 700, works in good combination for companies in EV battery manufacturing and e-mobility applications.

- **Additive Manufacturing:** Additive manufacturing processes have now developed into an entirely new industry for producing 3D solid objects by adding individual layers of material. These processes utilize recent dramatic improvements in computing power and motion and process control to deposit a range of materials at high speed accurately. Two processes employing IPG lasers are LMD (laser metal deposition) and selective laser melting (SLM).

- **Marking and Engraving:** The good absorption properties of most metals at near IR wavelengths make fiber lasers very attractive for laser marking applications. The beam quality, compact design, and maintenance-free operation of IPG Photonics’ Q-switched type and CW lasers are designed for a wide range of applications and fit most marking requirements.

- **Special Applications:** Fiber lasers also find their prime use in special applications like laser cladding and metal deposition, cleaning, sapphire cutting, and clinical applications in the medical segment.

Ask him about his 2020 plans when IPG Photonics (India) was planning to target industries related to battery welding and AM applications and Sharma says, “Although the pandemic caused a stop-start gap for all businesses globally, we were focused. We had the right approach to target these segments and are still pursuing it. Battery welding is a hot topic now, and we are not left behind. Our sales team is approaching these industries with the same vigor, and we plan to convert this segment to fiber laser applications.”

SD

Lead Your Audience @ Your IMTEX Booth
BOOK YOUR SPACE IN
SHOWDAILYTM

MURALI SUNDARAM

M: +91 970048390 | E: murali.sundaram@magicwandmedia.in

Printed & Published by Magic Wand Media



VISIT US:

IMTEX 2022
HALL # 4
BOOTH # C101
VENUE - BIEC, BENGALURU
DATES - JUNE 16 - 21, 2022

Transverse Profile



Finished Weld Surface



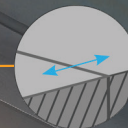
Seam Profile



Workpiece Height



Keyhole Depth

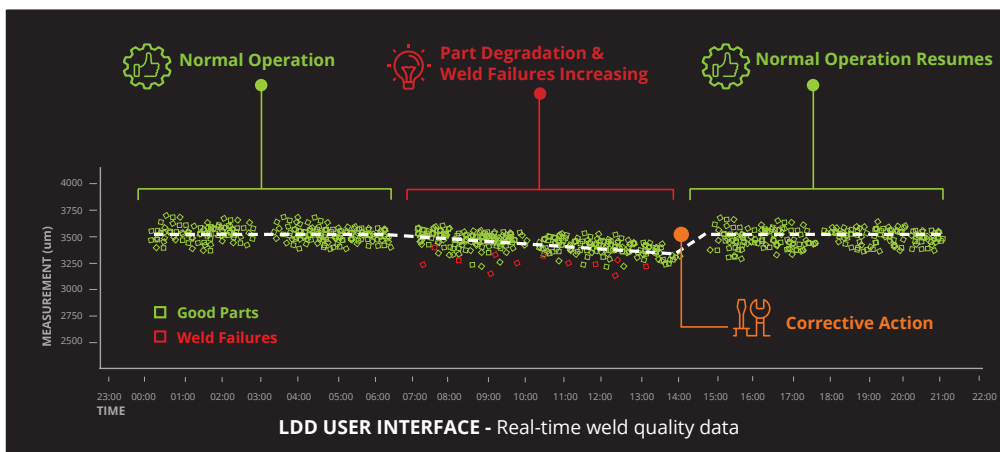


REAL-TIME LASER WELD MONITORING & CONTROL 20+ MEASUREMENTS

For Smart Manufacturing



Non-destructive real-time weld measurements without the time and cost of traditional sectioning



UNMATCHED MULTI-FACTOR LASER WELDING QUALITY ASSURANCE



LEARN MORE

PLASMA CUTTING MACHINES

Forging Bonds

Kjellberg Cutting and Welding India believes in-person events are crucial to building long-lasting professional relations and collecting direct feedback.

Kjellberg Cutting and Welding India Pvt Ltd
www.kjellberg.de
Hall 4, Booth B112



Source: Magic Wand Media

Kjellberg is the longest-established manufacturer of plasma cutting machines in the market and offers plasma cutting products for a wide range of different cutting tasks. Germany-based Kjellberg's subsidiary Kjellberg Cutting and Welding India Pvt Ltd in Pune takes care of all activities concerning sales and service in India since 2015. The company has set up a 24-hour hotline where one can reach its technical and service team.

Physical is Irreplaceable

"We are very pleased that IMTEX is taking place again this year. Personal contact with our customers and partners is very important to us. We are presenting the latest results of Kjellberg's development work at the trade show which are the new technologies of the high-end plasma source of the Q and the Smart Focus series," says Vishal Deore, Director, Kjellberg Cutting and Welding India.

Although he agrees with the advantages that online shows and webinars offer to companies, including they being cost-effective and environmentally friendly but is all for in-person events. "It is undisputed that traditional physical shows create unforgettable connections. Personal interactions add a distinctive element to professional relationships and create a long-lasting impact. In addition to relationship building, face-to-face events also allow organizers to collect on-ground feedback on a personal level," he adds.

Showcased Products

The Q power sources show how networking and communication will change the production processes of the future. According to the requirements of digitized production, the power sources with a modular design can form networks and exchange information with their own as well as other components. The Smart Focus series achieve excellent results in the cutting range from 1 to 100 mm and now additional with N2 plasma cutting up to



Source: Magic Wand Media

» It is undisputed that traditional physical shows create unforgettable connections. Personal interactions add a distinctive element to professional relationships and create a long-lasting impact.«

Vishal Deore
Director
Kjellberg Cutting and Welding India Pvt Ltd

80 mm for stainless steel. Even under challenging conditions, the highest cutting quality and speed are realized. **SD**

TURRET PUNCH PRESSES

Muratec Motorum 3048 TG with FS2512

Check out the latest technology from the inventor of Electric Turret Punch Presses.

Muratec Motorum-3048 TG, the new 30-tonne machine, comes with a two-piece design, wherein the press frame is isolated from the table base, resulting in higher quality parts and longer

life of Ball screws. Also, this machine comes with an In-Line punch drive, where the servo motor is parallel to the press frame, resulting in greater rigidity, less stress,

5 x 10 Ft. Machine Available

and long tool life. A wide table base with twin ball screws on the Y-axis is controlled by synchronized servo motors, resulting in accurate and stable movements during high-speed selection. Functions and features such as Scheduling function, processing graphic function, expanded 'Tool Library', Tool Management, Machine Control functions, Turret Monitor Function, and Tool Replacement assist the operator and increase the machine productivity.

layout. This design is compact, and the operator side is available for hot jobs and other manual operations. This FMC can be used for thicknesses from 0.6 mm to 4.5 mm. FS2512 comes with a three-stage advanced separation function as standard. Servo motor-driven loader enables high-precision repeatability of stopping position and faster loader in the cycle time of 20 seconds. FMC comes with a dedicated terminal for scheduling and maintenance management.

FS2512 Full Sheet Load / Unload Systems

FS2512 is designed as the same side sheet load / unload

FS2512 can also be offered with multiple 2- or 4-stack configurations. Both the machine and the loader can be offered in both 4 x 8 and 5 x 8 configurations. **SD**



Meiban Engineering Technologies Pvt Ltd
www.meibanengg.com
Hall 2A, Booth B110

Source: Meiban Engineering Technologies Pvt Ltd

The New 300kN Solution Latest Technology from the Inventor of the Servo Turret Punch Press



High-speed, Stable-processing fiber laser machine

LC VALSTER 3015 AJ G

AMNC 3i

* Also available for large format processing



New Hybrid Drive Retrofittable
Press Brake

HRB 1303

AMNC 3i



World's First Dual Servo
Press Brake

EG 4010



AMNC 3i



Hall No - 4
Booth No - B107



Amada (India) Pvt. Ltd.
Technical and Vocational Center
No.60, KIADB Bengaluru Aerospace Park,
Singahalli Village, Budigere Post, Bangalore,
North Taluk - 562 129, India.
Ph: 080 - 71100200



OPTICAL SYSTEMS AND OPTOELECTRONICS

Holding the Vision

Carl Zeiss India has launched three of its new products, which are already a big hit with its international customers. Apart from this, it is displaying a comprehensive range of its offerings for various industries.

Carl Zeiss India (Bangalore) Pvt Ltd
www.zeiss.co.in
Hall 3A, Booth D102



Source: Carl Zeiss India (Bangalore) Pvt Ltd

» Physical shows are most welcomed by the industry. The availability of multiple suppliers for the same equipment makes decision-making easy and quick for the customer at in-person events.«

Manoj K Sundaram
Head – Business Development
Carl Zeiss India (Bangalore) Pvt Ltd

Manoj K Sundaram, Head, Business Development, Carl Zeiss India (Bangalore) Pvt Ltd, deems the platform of IMTEX as one of the biggest in India for the Manufacturing industry. "It is an important event for us. Though rescheduled many times, we are glad it is finally happening, and we are part of it," he notes. "The availability of multiple suppliers for the same equipment makes decision-making easy and quick for the customer at physical events. This leads to a reduced lead time for a sale to us

and more business for the company," he adds. The company is looking forward to meeting professionals from the Automobile, NEV, Medical Manufacturing, Electronics, and Additive Manufacturing industries. "Considering this is an event on metal forming, we are eager to show our specially curated products at our stall to representatives from the Sheetmetal industry," shares Sundaram.

New Launches

The company has chosen the event as a venue for the official launch of

its three new equipment, which are already a big hit with its international customers. They are: a new compact X-Ray CT system METRO-TOM 1, focusing on the Plastic industry; a wide range Roughness and Contour measurement instrument - SURFCOM NEX SD2, for the Bearing and Aerospace industries; and a new CONTURA CMM. "Our customers appreciate the new design and innovative materials used in CONTURA. The solution space delivered by this equipment will impact the industry. The complimentary equipment displayed in the Microscopy

and Optical scanning space add to our offerings," he shares.

More on Display

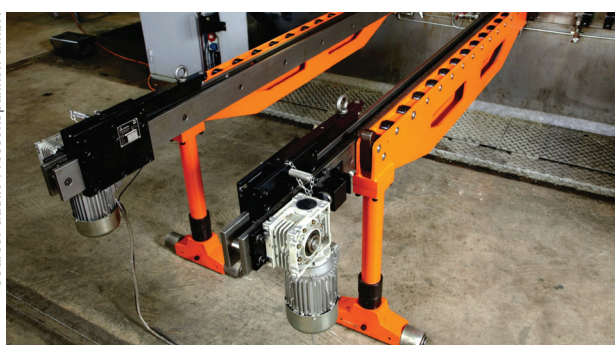
It is also showcasing its Microscopes, Optical, and Roughness stations. It is currently displaying: STEMI 305 for visual inspection; AxioImager M2m for particle analysis; and Smartzoom 5 for advanced failure analysis and quick documentation from the microscopy vertical. **SD**

MOTORIZED DIE LOADING ARMS

For Smooth Operations

Guthle motorized die loading arms are used for quick and easy die changing for dies weighing between 40 kN to 400 kN.

Güthle Pressenspannen GmbH
www.guethle-swt.de
Hall 3A, Booth E103



These motor-driven die loading arms, with a push-pull unit, guarantee smooth, safe, quick, and accurate die changes, including for heavy dies in one-man operations. The die loading arms are easy to operate using a manual control unit or control module on the workshop cart. There is no need for an interface with the press control unit. For accurate die position, the gear synchronization can also be converted for individual

precision control. The motorized die loading arms can be used flexibly for several presses or positioned statically in one place. The advantages of using motorized die loading arms with push-pull unit are as follows: • Smooth changing; • No need for an interface with the press control unit; • Various die widths possible; • Geared for parallel or individual precision control; and • After changing dies, the die loading arms can be quickly and easily moved away. **SD**

Source: Magic Wand Media

Source: Güthle Pressenspannen GmbH

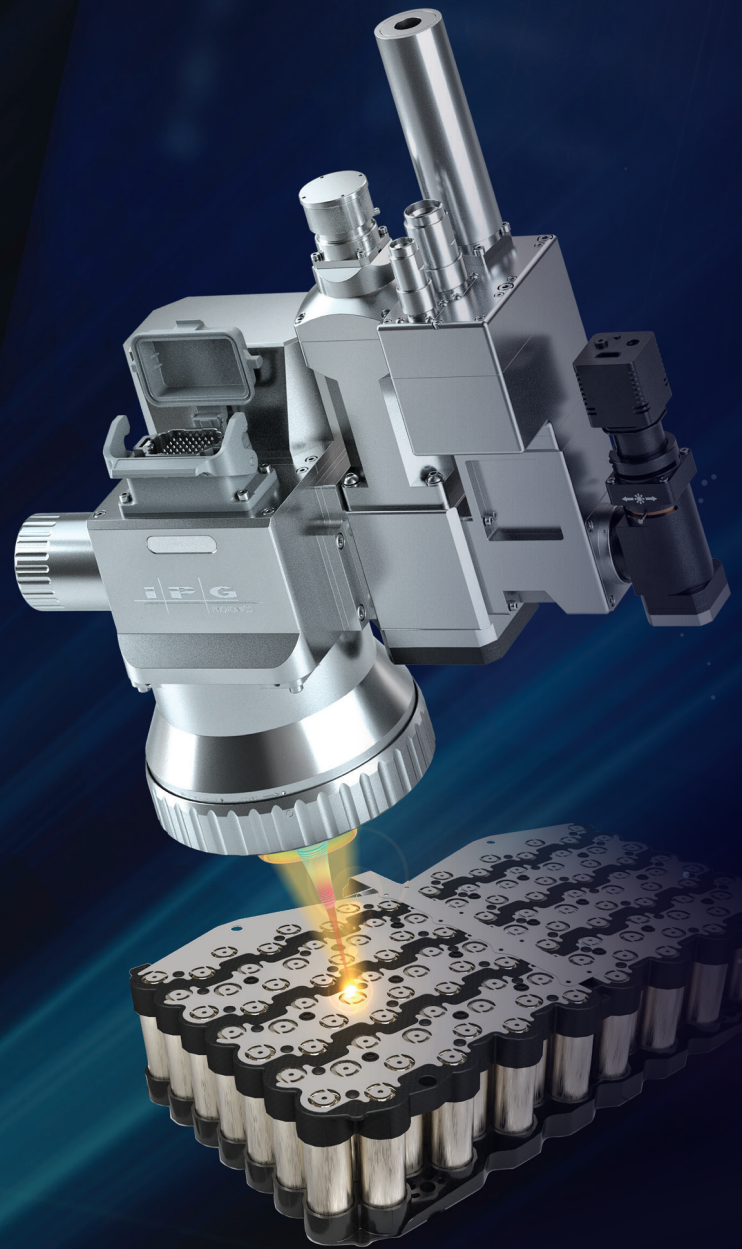


Adjustable Mode Beam (AMB) Fiber Lasers

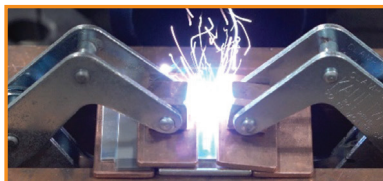
FAST, SPATTER-FREE WELDING

INDEPENDENT & DYNAMIC CONTROL of the Beam Profile

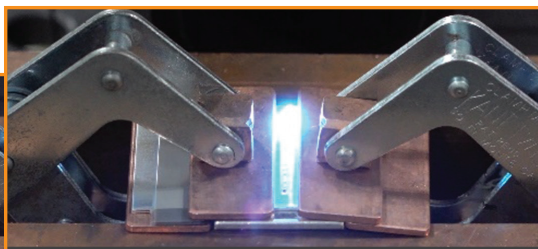
Any combination of a small-spot high intensity bright core and a larger ring-shaped beam



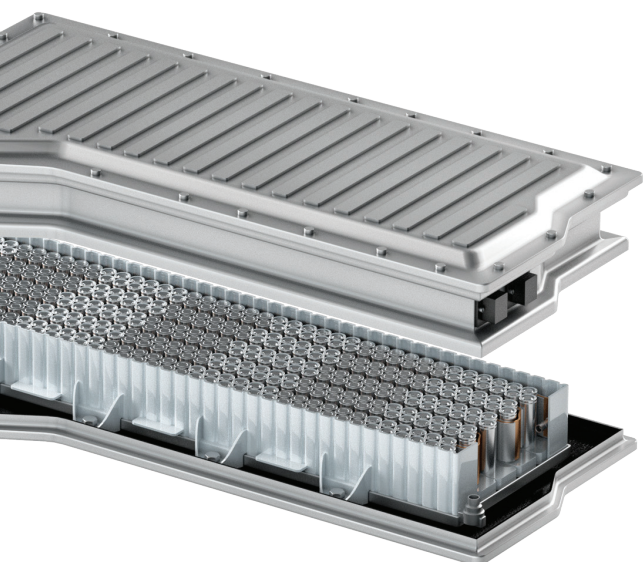
Normal Laser High-Spatter



AMB Laser Spatter-Free



UP TO **25** kW



VISIT US:

IMTEX 2022
HALL # 4
BOOTH # C101
VENUE - BIEC, BENGALURU
DATES - JUNE 16 - 21, 2022



LEARN MORE

DEBURRING AND FINISHING MACHINES

Valgro Hyzer DB - 32

Valgro Hyzer Samarth Series DB - 32 model is a high-performance machine for deburring and finishing sheet metal parts.

The Samarth DB Series deburring and finishing machine is designed to clean, deburr, and polish sharp corners, holes, edges, and variable parameters on metal sheet components without causing surface damage. Flat metal sheet component deburring is a versatile operation that allows a manufacturing unit to run more efficiently. Valgro Hyzer Samarth Series DB - 32 model is a high-performance machine for deburring and finishing sheet metal parts, which is suitable for sheet metal flat parts with a thickness of 0.8 mm to 3 mm and a working width of 800 mm. It cleans the surface of metal sheets by removing microscopic scratches, acid coatings, and oxide. The Valgro brushing and deburring machine is safer and more efficient than traditional deburring systems, and it has the potential to eliminate the need for

human deburring. Valgro has created numerous sheet deburring models in order to increase flexibility and reduce costs.

According to its name, the 'Samarth' Valgro Hyzer Db-32 machine is capable and perfect for removing the micro-level burr, No.1 and No.2 level burr, and giving matt, satin, and No.4 hair line finish on flat metal surface with accuracy.

Features

Available in a range of thicknesses ranging from 0.8 mm to 3 mm, the machine is suitable for a variety of metals, including stainless steel, zinc, aluminum, and others. Its environmentally friendly procedure fetches lower labor and low operational costs. It needs contactless handling to avoid scratches. It can be integrated into existing production processes and can deburr small and large parts simultaneously. Its compact design is ideal for small space units.

The Valgro Samarth Fabrika series Sheet Deburring machine is widely used in the Sheet Metal Fabrication industry, Kitchen Equipment Manufacturing, Dairies and Breweries Process Machinery Manufacturing, Pharma & Food Process Machinery Manufacturing, Architect and Building Construction (A.B.C. Sector), Lifts and Elevators Manufacturing, Stainless-Steel Tube, Rod and Flat Bar Manufacturing, Automobiles and Public Transportation, and Railways.



Valgro India Ltd
www.valgro.co.in
Hall 2A, Booth C102



Source: Valgro India Ltd

CNC TURRET PUNCH PRESSES

Offering High Reliability

Following the success met using the newest electrical technology on the EM MII series, AMADA goes even further with the electrical drive concept and extends its range with the new AE Series.

Source: AMADA India Pvt Ltd



AE NT Series CNC Turret Punch Press

AMADA India Pvt Ltd
www.amadaindia.co.in
Hall 4, Booth B107

standard AMNC-CNC controller, 45 stations turret / 58 stations turret, automatic tool lubrication system, and punching slugs power vacuum device.

Since 1970, AMADA has developed and produced more than 31,000 CNC-controlled Punching machines. Following the success of the newest electrical technology on the EM MII series, AMADA goes even further with the electrical drive concept and extends its range with the new AE Series.

Equipped with the new 'Single Electric Drive' system, AE Series offers high reliability and performance at an extremely low consumption rate. The general specifications of the AE Series make the machine suitable for production as well as multipurpose jobs. AE punching machines are the solution for the first investment. Available in 3 models (AE255NT: 1270 x 1270 mm, AE2510NT: 1270 x 2500 mm, and AE2610NT: 1525 x 2500 mm), which allows punching processes up to 6 mm thickness (high-density brush tables version on request). It features a

AC Servo Motor Driven Programmable RAM

The Concept of 'Single Electric AC Drive' is the result of the research engaged by AMADA for several years in the field of electric motors. Mounted onto the machine frame, this very compact system transforms the rotation from the servo-motor into a linear movement. The integrated management data from the CNC AMNC-F optimizes the striker stroke in order to achieve high-performance punching and high-accuracy forming operations. With greatly reduced maintenance costs and low electrical consumption (less than 1 kW in idle mode and 5 kW during the process), this technology is highly economical and ecological.

RAM

The ram can be programmed in 278 modes for various operations like Punching, Forming, Slitting, Knockouts, etc. These M Codes are pre-programmed in the machine controller and can be used for registering various tools depending on the operations.

Turret

A bi-directional, AC servo-driven turret comes standard with a 45-station thick turret. AC servo motors drive four Auto-Index stations. (Optional 58-station with 2 Auto Index turret is available) The turret is Meehanite casting, a material formulated with exceptionally high physical properties, including impact strength and resistance to shock, wear, heat, and corrosion.



UPS AND INVERTERS

Ideal place to raise professional visibility

» We are participating in IMTEX for the very first time and the experience so far is good as we are getting to meet all our target customers in one place, instead of going and meeting them at different places, which is a huge problem. Yesterday the response was a little slow but today its better. We are UPS manufacturer and wanted to make our presence felt and this is the best opportunity to do so. We have missed the earlier IMTEX as there was no need for us to participate then, but now we have moved to higher capacity UPS in the last two years on a very large scale. We have set up a huge manufacturing plant in Pune and being here makes us visible to so many OEMs, thus making it easier to sell our products.«



Source: Magic Wand Media

Prostarm Info Systems Ltd
www.prostarm.com
Hall 4, Booth C130

Raghu Shastri
Director
Prostarm Info Systems Ltd

ENGINEERED ALLOYS

Deep Drawing with AMPCO®25

Here's knowing how AMPCO®25 is a preferred choice for deep drawing, helping one in optimizing production and outgrowing their competition.

When it comes to deep drawing, conventional materials tend to suffer from various disadvantages. For example, cast iron may have good sliding properties, but the rate of wear of the tool is far too high. And even though tools from hardened steel have satisfactory working lives, they frequently suffer from pick-up. This may be solved by coating but after a certain number of shots, the sliding properties will then decrease, resulting in an increased coefficient of friction. This is where AMPCO®25 offers significant benefits. The alloy combines very high strength and hardness with a remarkably low resistance to friction. Due to the exceptional resistance of the material to corrosive or atmospheric influences, no special arrangements are necessary to prevent oxidation. It does not require any

additional coating or plating while being used for deep drawing dies. Because of the higher linear coefficient of expansion of AMPCO® material, the drawing gap between die and punch must be approximate over 12 percent of hot-rolled blank thickness and over 10 percent of cold-rolled blank thickness. The faces subjected to stresses (drawing edges) must definitively be polished (and AMPCO® alloys polish well). The benefits include: **Over tool steel:** Lower friction, no galling, tool manufacturing without heat treatment, and easier modification. **Over commercial bronze:** Higher hardness and quality due to homogeneous microstructure, better sliding properties, and lower wear. **Over coated materials:** bigger wear area definition possible, and changes of geometry possible at any time. AMPCO METAL INDIA provides solutions for deep drawing of kitchen utensils, cookware, pressure cookers, kitchen sinks, home appliances, industrial deep drawn components, etc. AMPCO® Aluminum Bronze alloys are perfect for an excellent surface finish on stainless steel and with the properties of AMPCO®25 one gets: High hardness and comprehensive strength; Excellent sliding characteristics; No cold welds, no galling; Increased product quality with excellent surface finish; No hardening or expensive coating required; and Ease in regrinding and polishing. **SD**

AMPCO METAL
www.ampcometal.com
Hall 3A, Booth A104



Source: AMPCO METAL

INDUSTRY DELEGATES

IMTEX 2022 Helps Skill Trainers Achieve their Objective



Source: Magic Wand Media

A group of three delegates from three affiliated organizations of Madhya Pradesh is visiting IMTEX to invite industry professionals to impart the requisite knowledge and skills to their students aspiring for roles in the industry.

Rajendra Kumar Austin, Deputy Director, Madhya Pradesh Skill Development & Employment Generation Board, shared his experience, "We run a training institute in Madhya Pradesh and have come with a purpose to select and interact with the latest technology provider companies so we can invite them to train our students on their cutting-edge technology applications. We have received a favorable response from some companies."

Vijeta Shrivastava, Technical Assistant, Asian Development Bank, said, "We have come here to know the companies that may be interested in hiring our students. We launched the Global Skills Park project in 2019, a big dream project of the Madhya Pradesh Government. Our pilot project City Campus is now functional, and our trained students are being hired globally. Events like IMTEX are significant promotional platforms for us. We have interacted with several companies here and explained our plans and programs to them."

Farha Naim, Placement Officer, Global Skills Park, Government of MP, said, "We have lost almost the first three years after the launch of the Park. Our aim now is to leverage the IMTEX 2022 platform to make the industry insiders aware of our endeavor and the advantages of hiring our trainees equipped with just the right skills." **SD**

www.jqlasergroup.com

JQ-1530E
Simple in Structure, Powerful in Functions
Suitable for all kinds of industrial sheet metal processing
Horizontal accuracy of integral welding platform is ≤0.5mm

JQLASER SHARDA ENGINEERS Sri Sai Sheet Metal Machines India

SHARDA ENGINEERS
T: +91- 9958199762 / 8178907557
E: sharad@shengg.in / info@shengg.in
www.shengg.in

SRI SAI SHEET METAL MACHINES INDIA
T: +91-9845068437 / +91-9886040873
E: skr@srisaisheetmetal.com / sales@srisaisheetmetal.com
www.srisaisheetmetalmachines.com

Hall 4, Booth A138

AATMANIRBHAR BHARAT

The Drive to Succeed

Nimble Electric, a part of UCAM, has some authentic world-class indigenous products on display at the Aatmanirbhar Bharat Pavilion.



Source: UCAM Pvt Ltd
Indradev Babu (second from left) along with his team members at IMTEX FORMING 2022

Indradev Babu, Managing Director, UCAM, strongly supports indigenous manufacturing, and hence is thrilled to be part of the Aatmanirbhar Bharat Pavilion at IMTEX. He believes that the initiative will make a significant contribution to the nation's vision of transforming itself into a global hub for manufacturing and services.

"We at UCAM and Nimble Electric considered the Government Initiative by the Ministry of Commerce and Industry on the adoption of technology and indigenously developed direct drive technology to make India self-reliant. This technology helps increase capacity and improves the quality of products," he shares.

This technology has the following advantages: • Clean mechanical energy • Improved Servo Performance • Zero Maintenance • Many different documents • High Performance Payload.

Interestingly, the company is also participating in the technology development fund by DRDO to develop new technologies to boost the indigenization of the Indian defense sector.

Drives that Matter

With the Direct Drive technology, Nimble Electric provides a range of diversified indigenous, custom-engineered motor products including high-precision direct drive rotary and linear solutions. Rotary motor solutions include custom frameless BLDC torque motors, framed BLDC motors, propulsion motors, and turnkey solutions, requiring precision positioning with direct drive rotary motors, and linear motors include an array of iron core motor and core-less motor solutions.

Nimble Electric is the first to represent the country with 'Make in India' high-speed torque motors. The products that it is showcasing include:

Direct Drive Frameless Series: The company has introduced its high-performance, energy-efficient, compact, and superior quality Orion, Phoenix, Topaz, and Opal Torque Motors made using magnetic grade steel, H class insulated copper, and high-temperature, high-strength neodymium iron boron magnets.

Linear Motors: Nimble Electric under its JADE series offers an array of Iron core motor and core-less motor solutions that help to meet high-speed and faster acceleration requirements.

UCAM Rotary Tables: UCAM's compact and latest range of direct drive rotary tables are compatible with almost any machining center. **SD**

VISITOR VIEWS



» This is my first time at IMTEX FORMING. I have come from Vadodara, Gujarat, to explore new technologies. People have flown down from different parts of the country to attend it. The exhibition is quite informative, especially regarding laser welding and additive manufacturing. The exhibitors are generous with their time and patiently solve your queries. We are highly satisfied.«

Rajesh Chauhan
General Manager
Royal Electronics Sales & Services
Vadodara



» We are regular participants in IMTEX exhibitions. This time, the number of stalls is less due to the current pandemic situation. However, that has not hampered the attention and guidance one receives at the stalls, a hallmark of IMTEX. The Aatmanirbhar Bharat Pavilion is an encouraging addition to the show, as is the trolley service.«

Hariprasad Padaki
Carl Zeiss India Pvt Ltd

Access at Anytime

Access from Anywhere

Access to Anybody

- ♦ Accessible 24x7 at your flexible timings
- ♦ Contents developed by SMEs / Industry Experts
- ♦ Interactivity, animations and videos built in
- ♦ Knowledge checks and Final assessment for evaluation
- ♦ Bulk licencing for Industries / Institutions
- ♦ On-line certification

Enhance your professional capability through
E-learning courses

Get started... Now... Log on to...
www.imtmaelearn.in

IMTMA Technology Centre
Indian Machine Tool Manufacturers Association
www.imtmatraining.com | www.imtmaelearn.in

For further details and registration, please contact:
Contact : 9535162810
e-mail : kng@imtmaelearn.in
www.imtmatraining.com | www.imtmaelearn.in

PRECISION METROLOGY EQUIPMENT

Marposs Reveals its New Business Line at IMTEX FORMING 2022

Marposs India Pvt Ltd
www.marposs.com
Hall 3A, Booth B103



Luca Matteucci, Director, Marposs at IMTEX FORMING 2022

sector for more than 30 years and so far has focused on the automotive segment. It is now foraying into the non-automotive segment too. Luca Matteucci, Director, Marposs, elaborated, "We have been present in the country for the last 30 years and have a strong commitment towards the Indian market. The Indian manufacturing industry is growing at a rapid pace. We are now planning to set up our own manufacturing plant. That way, we have a strong focus on the Indian market." In the recent past, Marposs has acquired some companies that are very strong in forming technologies. This has strengthened the company to diversify its business line and cater to the customers from the non-automotive segment.

With most of the manufacturing industry present at IMTEX 2022, the event is a perfect venue for disclosing the company's plans. "Through IMTEX 2022, we wish to communicate to everyone in the forming industry that Marposs solutions are now also available for the non-automotive manufacturers," revealed Matteucci. At the event, Marposs has displayed forming solutions related to physical sensors, software, protection, and monitoring devices. These sensors are used for machine production, monitoring, security, etc., and help the users lower their costs and improve productivity. All these sensors can be seamlessly integrated with the ERP processes of the customers, giving them cost benefits. **SD**

Machine Tools' Metrology and Control Solutions provider Marposs has leveraged the IMTEX 2022 platform to relay the news of taking a plunge into a new business line. The company has been catering to the Indian manufacturing

SHEET METAL WORKING SYSTEMS

Gains Through Flexible Automation

Salvagnini proposes to replace a purely quantitative approach that focuses only on productivity with another that combines both quantity and quality to fully exploit the benefits assured by flexible automation.

Salvagnini has been designing, producing, and selling flexible systems. Flexible automation means transforming packs of sheet metal into a wide variety of products, in a lean environment and with no intervention by the operator, in a progressive production process, using proprietary punching, cutting, bending, and panel bending technology. In practice, the result of an automated, organized process can exceed the sum of the benefits obtained in each activity by eliminating any redundant intermediate activities. How? Let's take a detailed look at the production process.

Optimizing Individual Production Phases

The progressive shift from a make-to-stock strategy, with large batches, towards a lean, make-to-order, just-in-time strategy based on medium and small batches and an increasingly variable production mix. To respond to this variability and uncertainty, the market is looking more and more to flexible production systems.

All Salvagnini solutions are designed to increase the efficiency of the specific production phase.

- The panel bender adapts completely autonomously even to the varying mechanical and geometrical characteristics of the sheet metal being machined, as well as to the external environment.
- The laser requires no adjustments, thanks to the single optic cutting head, the process sensors, and several artificial vision systems.
- The combined punching/shearing and punching/laser machines are equipped with a multi-press head that can hold up to 96 tools.
- The press brake automatically adapts to re-tooling and tool management according to what needs to be produced, with its ATA, MVM, and AU-TO devices, thus extending its flexibility and autonomy.

Eliminating Activities with Low Added Value

Automatic cutting, forming, and panel bending systems have become extremely quick and productive, shifting the problem of



Salvagnini Machinery India Pvt Ltd
www.salvagninigroup.com
Hall 4, Booth B102

efficiency to the loading and unloading phases, which, increasingly often, risk becoming authentic bottlenecks. In production contexts marked by low volumes and rapid production changeovers, connecting automatic loading/unloading devices to the systems is a winning strategy for recovering efficiency.

Salvagnini responds to this need with a wide, modular range of automations. This includes:

- automatic loading/unloading and sorting devices, coupled to a store, which are an enabling factor for increasing the autonomy and efficiency of individual systems;

- robotized unloading devices, which ensure that the panel bender is immediately available for the next job after completing the previous one, eliminating waiting times which benefit from the precision offered by automatic bending and robotized stacking;

- intermediate automation devices that minimize and balance material transfer times from one workstation to the next;

- software solutions facilitating the production process even without large physical devices, lowering the entry barrier into the world of smart manufacturing. **SD**

Source: Magic Wand Media

Source: Salvagnini Machinery India Pvt Ltd

AATMANIRBHAR BHARAT

Together to Succeed

MTAB Engineers Pvt Ltd is in the automation space and Company Director Arthi Sairaman is happy to have a dedicated space to showcase industrial robots developed in India.

Source: Magic Wand Media



The company is showcasing MTAB's Kriya AR10-1400, 10-12 kg payload 6-axis articulated robot with a welding application. It has been developed and commercialized by MTAB under the Government of India's Department of Heavy Industries initiative and in collaboration with AMTDC (IIT-Madras).

This indigenous design has been benchmarked against popular brands with good ratings. "Our goal is to create a platform on which partners and end-users can create solutions for their automation, through a network of solution providers. This event will give us an opportunity to partner with machine tool manufacturers for machine tending, with

system integrators and researchers to build an ecosystem," Sairaman says.

For its robots, AGVs and simultaneous 5-axis micro-machine, MTAB uses complex components for electronics, controls, motors, harmonic gears, etc. These components are currently not available locally and are imported. "We are working on the next phase of robot development as a cohort program, where local companies are developing core technologies that we plan to test and integrate into the robots. There is give and take in this type of development and testing, where we make a few changes to accommodate their design and the cohorts make a few changes to accommodate our needs," shares Sairaman.

Technology is Key

Small businesses tend to be agile in adoption and need a succinct concept and easy access to infor-

mation. "I know many businesses that can benefit and bring products and services to market sooner, if they knew what is available to them through these resources," she says.

Sairaman agrees that the adoption and creation of technologies are important for businesses. In the manufacturing sector, these take time to build, as it requires several ancillary industries to help in its development. "It is important to approach technology development and adoption as an ecosystem, thus encouraging and challenging members of the ecosystem to evolve. Simply put, we need more local consumption of Aatmanirbhar products to drive and accelerate the development," she says firmly.

SD

MTAB Engineers Pvt Ltd
www.mtabautomation.com
Hall 3A, Booth E123

METALLOGRAPHY EQUIPMENT

Cutting it Clean

Chennai Metco's Carbide Rod Automatic Cutting Machine is designed to cut carbide rods to preset lengths.

Carbide tools are now popular cutting tools. The production of carbide tools involves the sectioning of carbide rods. A bunch of samples can be loaded at once, which can then be automa-

tically cut into various length sizes as preferred. Preset programs are possible with an intuitive, easy-to-operate, and user-friendly system via a PLC touch screen. A hydraulic clamping system is available for easy holding of samp-

les. After cutting, the samples can be automatically collected in a basket. For high-volume production and repeated results, the company's Automatic Carbide Rod Cutter can be of great use.

SD



Chennai Metco Pvt Ltd
www.chennaietco.com
Hall 3A, Booth F102

Would you like to be crowned a Productivity Champion ?

.... Share your success stories on

PRODUCTIVITY | TECHNOLOGY | INNOVATION

Win Cash Awards upto

₹ 10,00,000

@

National Productivity Summit 2022
18 - 19 November 2022, Bangalore



IMTMA - ACE MICROMATIC
Productivity Championship
Awards 2022

AWARDS SPONSOR



No Entry Fee !

Multiple Entries are Welcome !

RUSH YOUR ENTRIES NOW !

Productivity Champions of Yesteryears

• Mahindra & Mahindra • Hero Motocorp • SKF • Maruti Suzuki • Tata Motors • Bajaj Auto • TVS Motors • Bosch • Godrej & Boyce • Toyota Kirloskar Auto Parts • Titan Industries • UCAL Fuel Systems • ACE Designers • Delphi TVS • BHEL • HAL • Tata Steel • BEL • Rane TRW • L&T MHPS • Cummins • Adler Mediequip • Associated Plasmatron and many more...

Organised by: **Indian Machine Tool Manufacturers' Association**
www.imtma.in

To participate, please log on to: www.productivity.imtma.in or call Abhishek on: +91 9844294387

STRENGTH IN UNITY

IMTMA and IIW Join Forces

Source: IMTMA



Indian Machine Tool Manufacturers' Association (IMTMA) and Indian Institute of Welding (IIW), Pune, signed an agreement on June 16, 2022, at IMTEX FORMING 2022 to jointly organize WELDEXPO, an exhibition on welding, cutting and joining from IMTEX FORMING 2024 onwards at Bangalore Inter-

national Exhibition Center (BIEC). This coming together will facilitate exchange of new technologies among the end-user community. This endeavor will help both the institutions supplement each other's growth and work together for the betterment of the industry. Commenting on the development, Ravi Kumar, Past Chair-

man, IIW, informed, "This association between IIW and IMTMA is going to create a bigger platform. We have around 5,000 members, and earlier had our own training programs and exhibitions. Henceforth, IMTEX will include welding, which will benefit the entire manufacturing industry as the visitors

will get to witness everything in one exhibition." Guru Prasath KR, Executive Director – Trade Fairs, IMTMA added, "The ecosystem of the welding industry is used by the metal forming community. This MoU will facilitate direct interaction between them, benefitting both industries." **SD**





International Forming Technology Exhibition

Concurrent Shows



International Exhibition of Dies & Moulds, Forming Tools, Machine Accessories, Metrology and CAD / CAM



International Exhibition on Industry 4.0 & Additive Manufacturing

18 - 23 January 2024, Bengaluru, India

Organiser



Indian Machine Tool Manufacturers' Association

Venue



Bangalore International Exhibition Centre



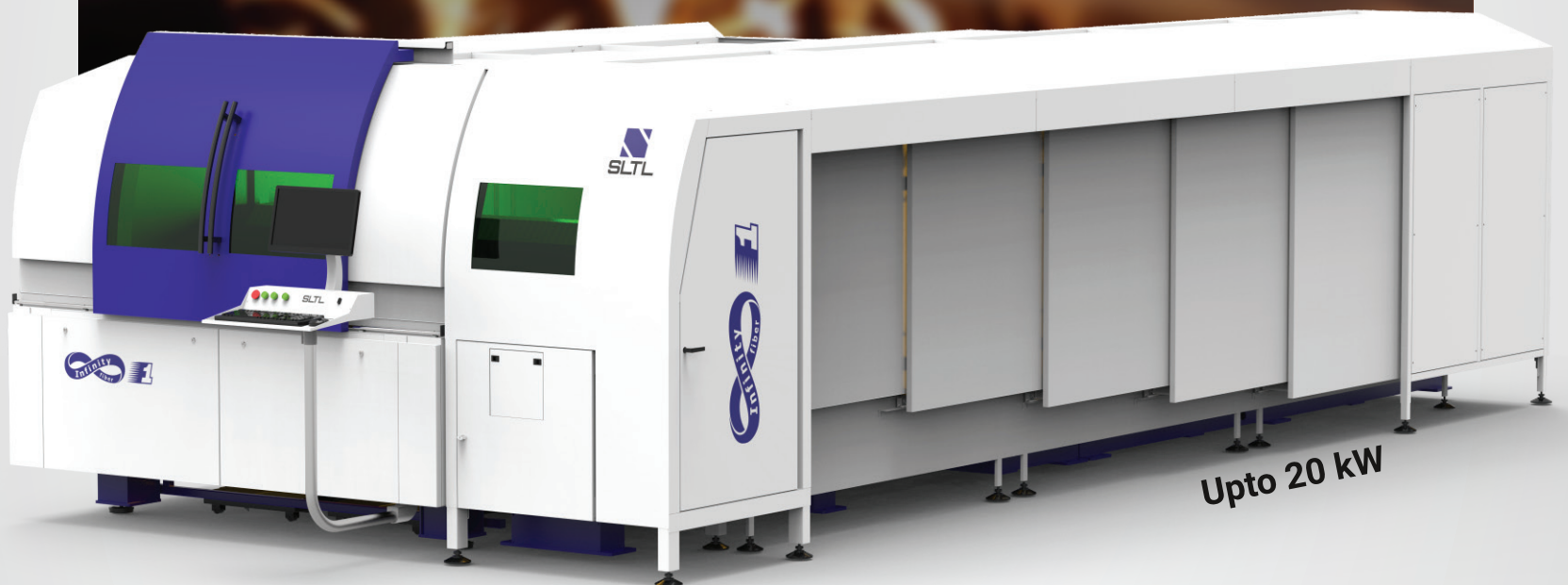
Ufi Approved

www.imtex.in

Follow us on    

NEW ERA OF PRODUCTIVITY

Bringing a next-gen system for your futuristic needs



**LASER INNOVATORS BRINGING YOU SYSTEMS
WITH ALL NEW MODULAR PRODUCT ARCHITECTURE**

Power-packed fiber laser cutting machine,
designed to grow with your growing needs

VISIT US @

HALL : 4 | STALL : B-108

Change for the Better!